

# SEW INDUSTRIAL SEWING PEDESTAL

INSTALLATION AND REPAIR MANUAL

(pictures may vary with each model)



EQUIPMENT SALES | PARTS | MANUFACTURING

6867 Martindale Shawnee, Kansas 66218

Phone 913-441-4788 Fax 913-441-1711

[Jembaggingsscales.com](http://Jembaggingsscales.com)

# **JEM SEW PEDESTAL**

## **INSTALLATION INSTRUCTIONS**

### **Positioning of the sewing pedestal**

Position the sewing pedestal such that the sewing machine is perpendicular to the conveyor and the needle are centered over the conveyor belt. Once the correct position has been attained, set the brake on the two locking casters.

### **Installing Electrical Supply**

The units have been supplied for either 110 volt/single phase, 220 volt/single phase, 220volt/3phase, 380 volt/3 phase, or 440 volt/3 phase power. The voltage for which the unit has been wired is shown on the specification sheet and marked on the motors. Be sure that the voltage supplied matches the voltage of the equipment. Customer must provide (hard wire) to the control box. Check for correct rotation of the sewing head. Interchange any two power leads to reverse.

## **SET-UP AND OPERATION**

Place the cones of sewing machine thread upon the thread cone holder. Thread the sewing machine as per the manufactures recommended procedure. Apply electrical power to the unit. Set the sewing machine to the appropriate height for your bag. The height may be adjusted up or down by turning the hand crank on the side of the pedestal. Turn ON the sew pedestal. Make certain that the E-Stop switch is deactivated. The power infeed will begin running at this time. The sewing head energizes from acknowledgment of the right hand photo-eye. Sewing head continues to run until bag clears this photo-eye and run timer times out. The cutting of the thread is controlled by the left hand photo-eye. Once the bag clears this photo-eye the cut command is activated for its time value. Readjustment of either photo-eyes position should not be necessary from the factories set positions. If timer changes are needed please refer to the “Adjust Photo-Eye Timers” writ up.

## **MAINTENANCE**

Very little maintenance is required. After time if sew height is frequently adjusted, Re-tensioning of the lifting chain may be required. Maintenance the sewing head and all sewing accessories (Infeed, Cutting device, etc.) per the manufacturer’s recommendations.

**NOTE:** The motors, gear box, and sewing machine have been lubricated at the factory prior to shipment. However, in transit, occasionally lubrication has been lost. Check carefully for any signs of oil in packing or loss of oil in the first hours of operation. (Do not use equipment if in low oil condition).

## **TROUBLE SHOOTING**

### **Sewing Pedestal Does Not Raise or Lower**

Check the gear box for lubrication. Repair or replace as necessary.

Check the lifting chain and sprocket for obstruction or wear. Repair if necessary.

**Sewing Machine does not function**

Check the AC Power Supply. Is the circuit breaker turned on?

Check the EMERGENCY stop switch for activation.

Check the 24 volt power supply fuse.

Check the photo eye. Is it aligned properly? Does it have power?

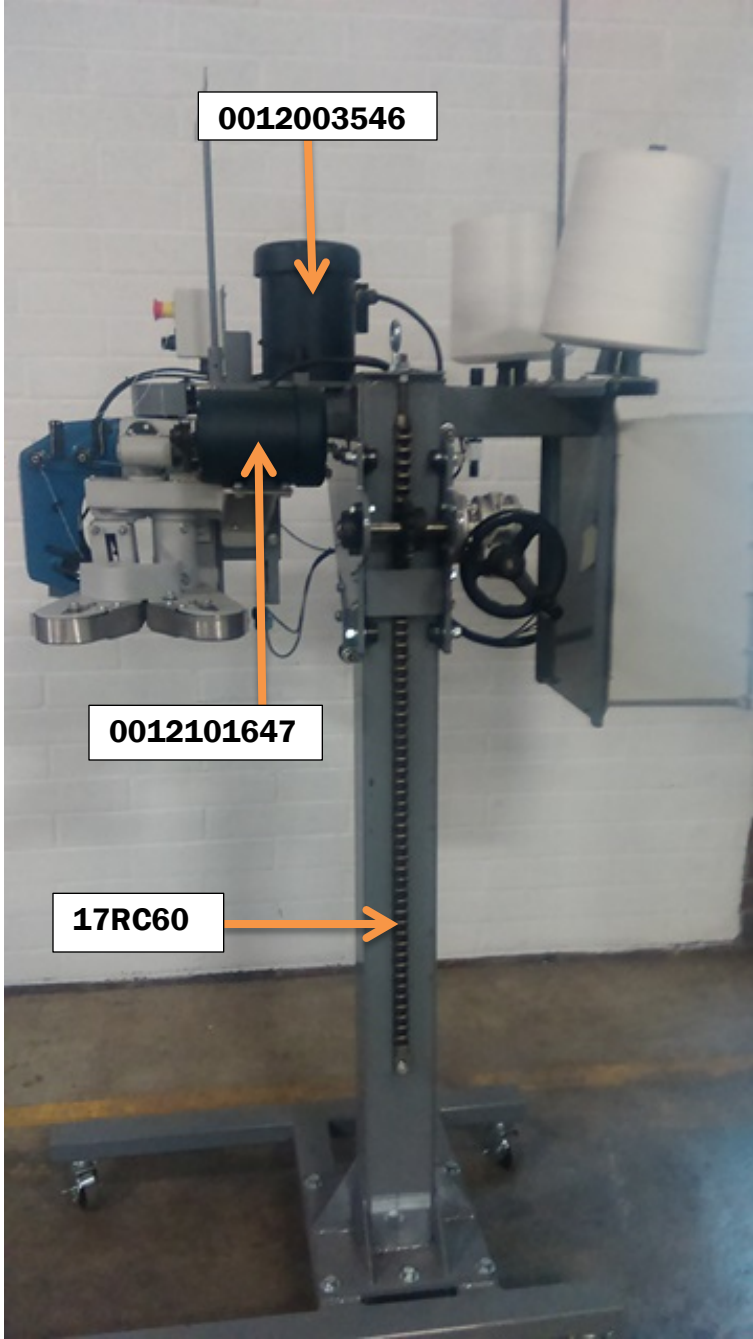
Check for loose wire termination and secure.

If the unit still fails to function, call JEM International at 913-441-4788.

## Sewing pedestal timer adjustment

From the home screen that is displaying the date and time perform the following to adjust the 2 timers in the smart relay.

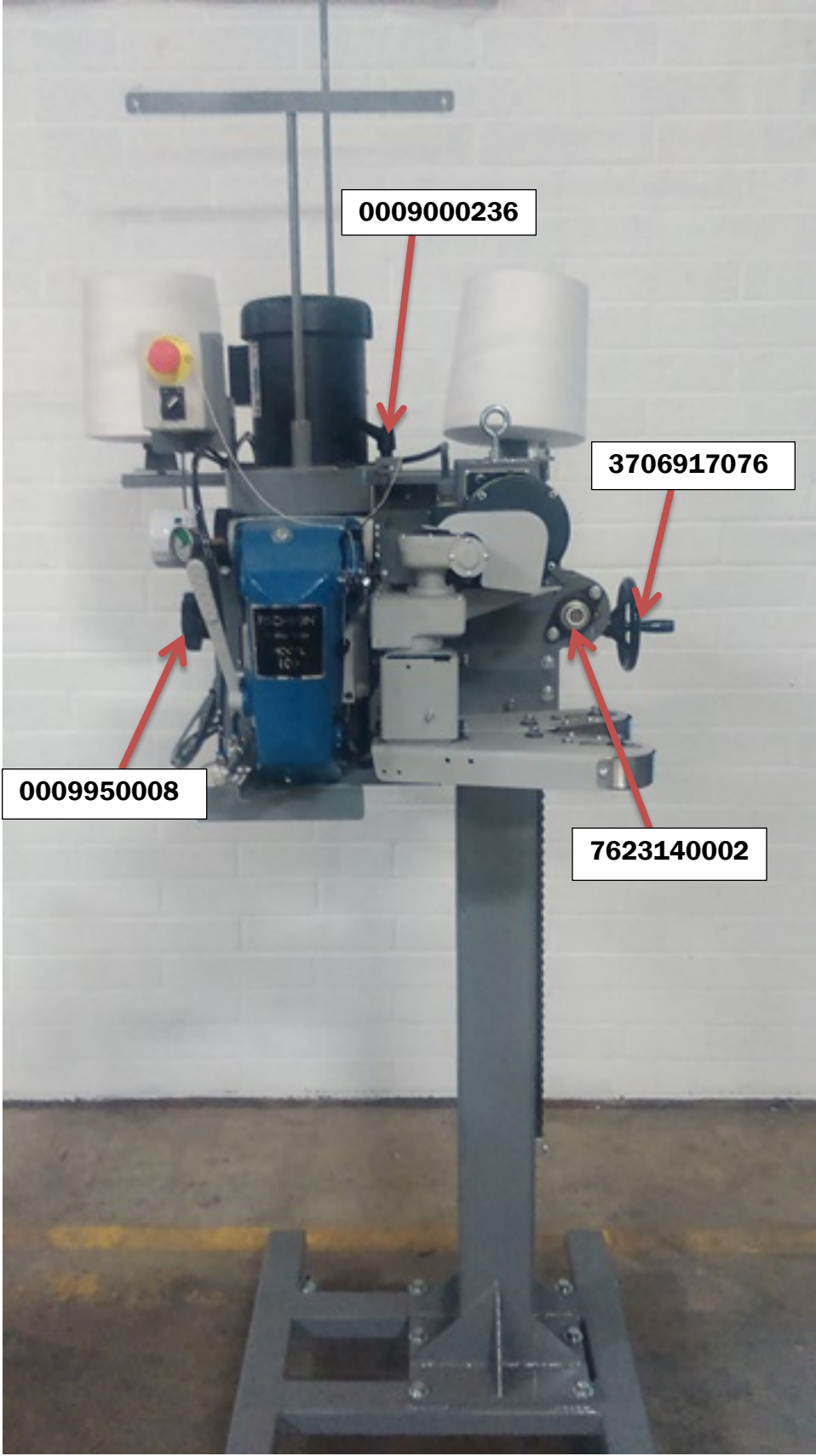
1. Press ESC.
2. Press the DOWN ARROW.
3. Press OK.
4. B1—this is an off delay timer. This timer controls how long the sewing head stays on after the bag has past the photo eye. If you do not wish to change this timer proceed to step 8.
5. Press OK.
6. Use the LEFT/RIGHT arrow keys to scroll to the time. Use the UP/DOWN arrows to adjust the time.
7. Press OK.
8. Press the UP ARROW.
9. B3—this is the cut timer. This is how long the cutter is forward to cut the bag.
10. Press OK.
11. Use the LEFT/RIGHT arrow keys to scroll to the time. Use the UP/DOWN arrows to adjust the time.
12. Press OK.
13. Press ESC 2 times.



0012003546

0012101647

17RC60

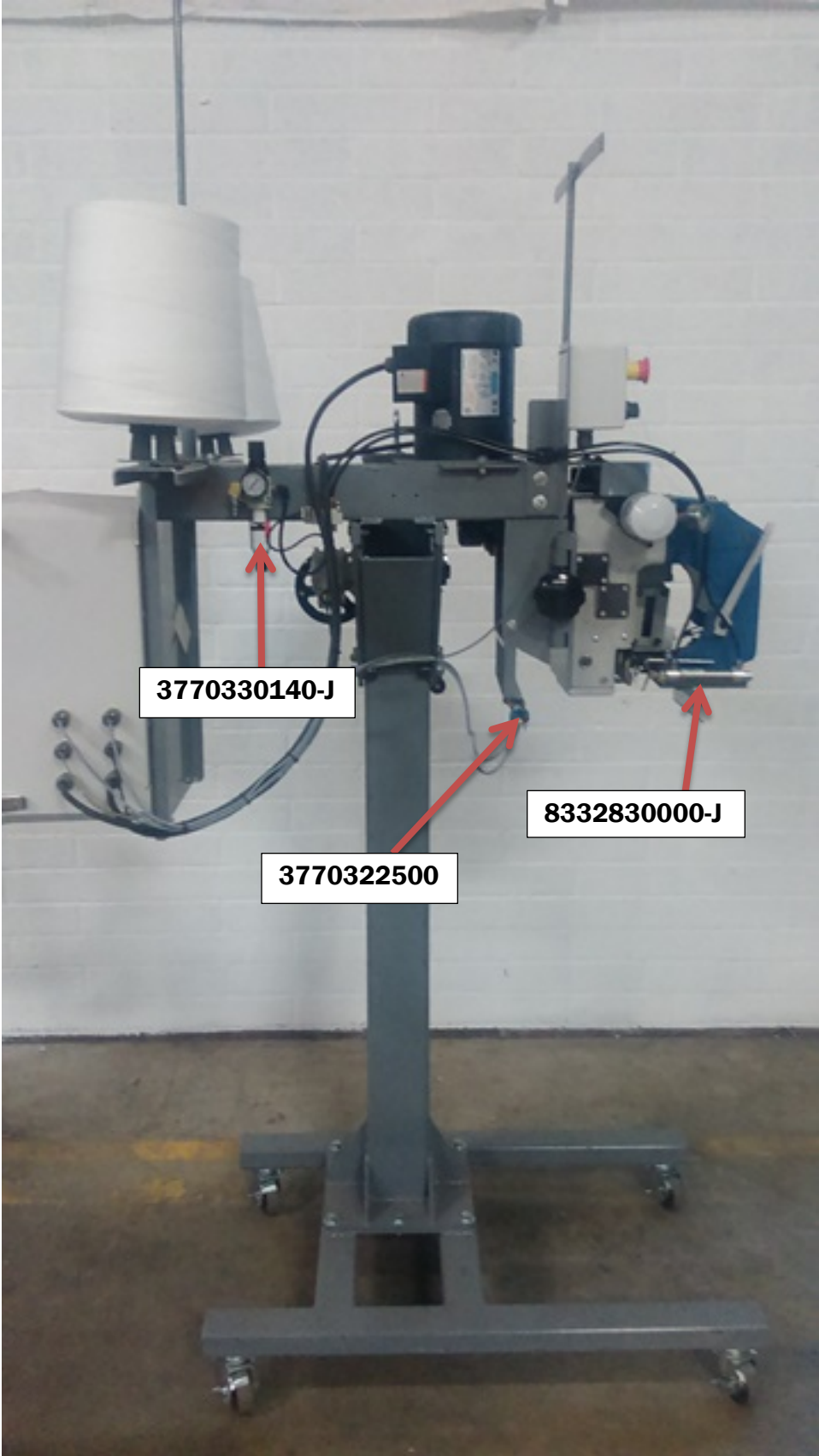


0009000236

3706917076

0009950008

7623140002



3770330140-J

3770322500

8332830000-J

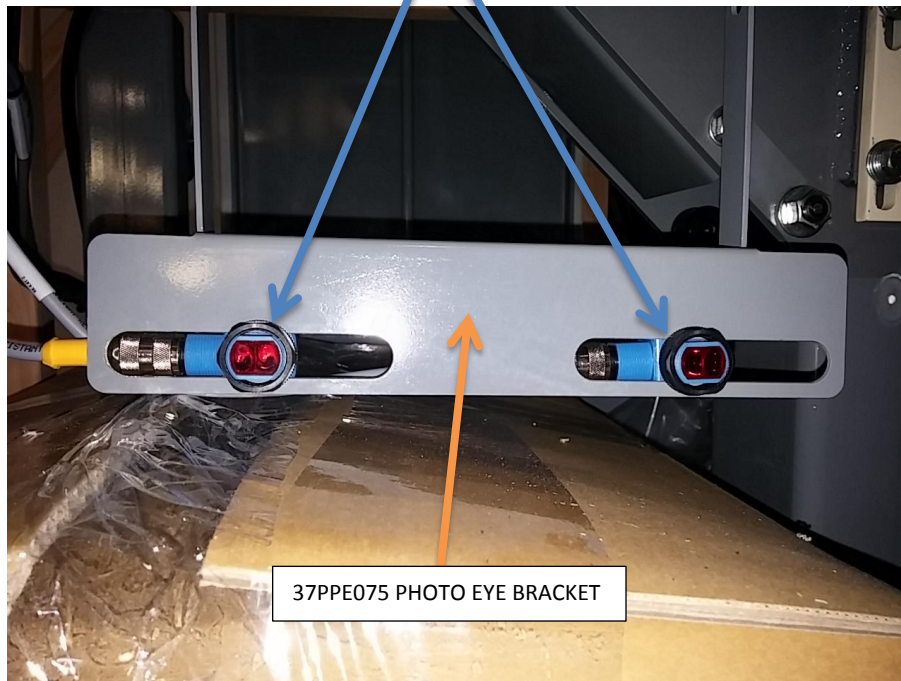


3700580600

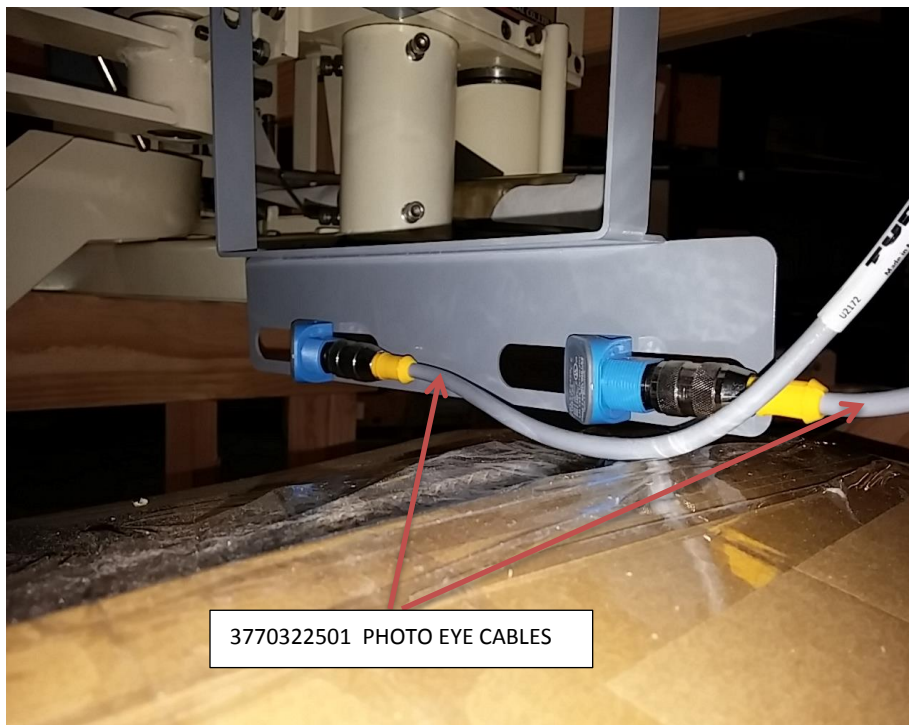
95GA032C



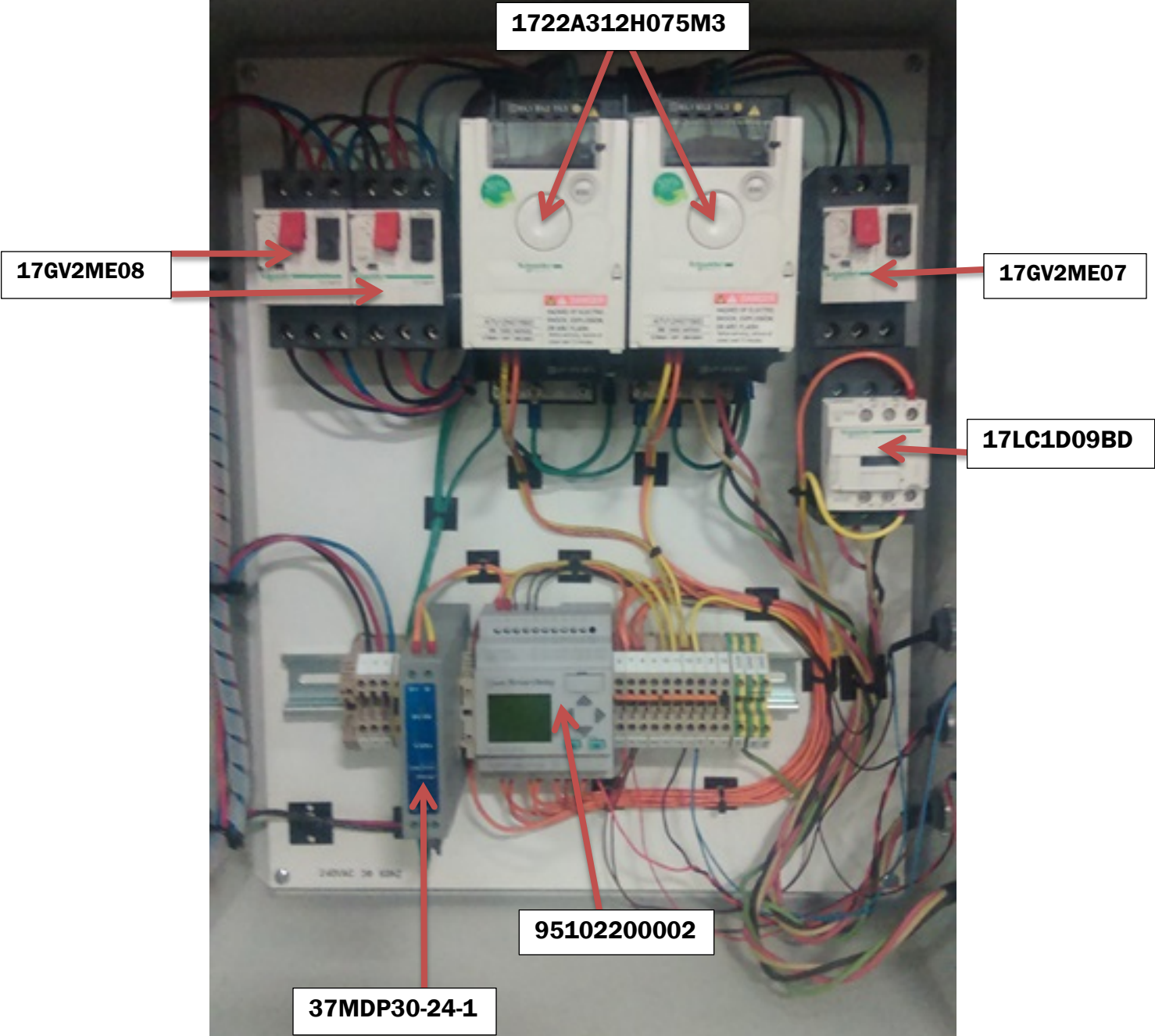
3770322500 PHOTO EYE



37PPE075 PHOTO EYE BRACKET



3770322501 PHOTO EYE CABLES



ITEM#	DESCRIPTION
0012101647	POWER INFEED MOTOR
0012003546	SEWING HEAD MOTOR
7623140002	2 BOLT FLANGE BEARING 3/4" BORE
0020601412	SPROCKET
17RC60	CHAIN
17RC601	CHAIN MASTER LINK
3770330140-J	AIR FILTER-REGULATOR
3770330142-J	AIR PRESSURE GAUGE
8332830000-J	CYLINDER, THREAD PUSHER
383L310	V-BELT
0009950008	PLASTIC HANDLE / KNOB
178401821SS	CHAIN TIGHTENER
0000100106	THREAD CUTTER FRAME
37PSW002	PHOTO EYE MOUNTING BRACKET
0000100027	CASE OF 8 THREAD SPOOLS
3700580600	GEARBOX FOR HAND CRANK
3706917076	HANDWHEEL ASSEMBLY
0009000236	LOCKING KNOB
0009950010	PLASTIC HINGE, PULLEY COVER
3770322501	PHOTO EYE CABLES
7051150000	CAM FOLLOWER BEARING
7051180000	ECCENTRIC CAM FOLLOWER BEARING
44506-0720	EYE BOLT, THREADED
3770322500	PHOTO EYE
17GV2ME08	STARTER, 2.5-4 AMP
17GV2ME07	STARTER, 1.6-2.5 AMP
17LC1D09BD	CONTACTOR COIL 9AMP 24VDC
1722A312H075M3	VARIABLE SPEED DRIVE 240V
95102200002	SMART RELAY 24VDC
37MDP30-24-1	POWER SUPPLY, 24V OUTPUT
37PPE045	CHAIN MOUNTING BLOCK, BOTTOM
178401821SS	CHAIN TIGHTENER, TOP
37PPE023	POWER INFEED MOUNTING BRACKET
37PPE052	PULLEY AND BELT COVER
95GA032C	ON/OFF SWITCH
37PPE043A	THREAD SPOOL HOLDER
373015T23	REAR THREAD GUIDE